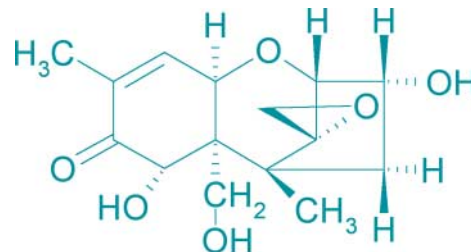


# Trichothecenes (Type A and B)

Romer Labs® clean-up columns for Trichothecenes offer the versatility in analysis depending on the complexity of the commodity and the choice of detection method used.



## 1-step clean up

### MycoSep®227 Trich+



- Time for clean up: <60 seconds
- 2 formats of the same column
- Stability: 18 months
- Recoveries: >95%
- Repeatability: <5%
- For cereals, grains, mixed feeds...

### MultiSep®227 Trich+



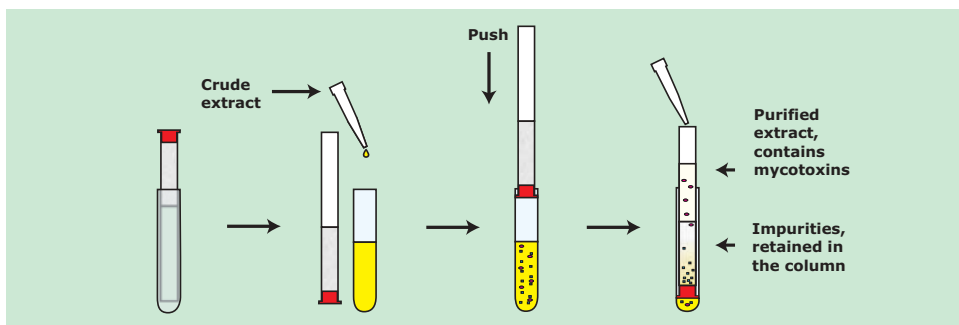
## Additional clean up for complex commodities

### MultiSep®216



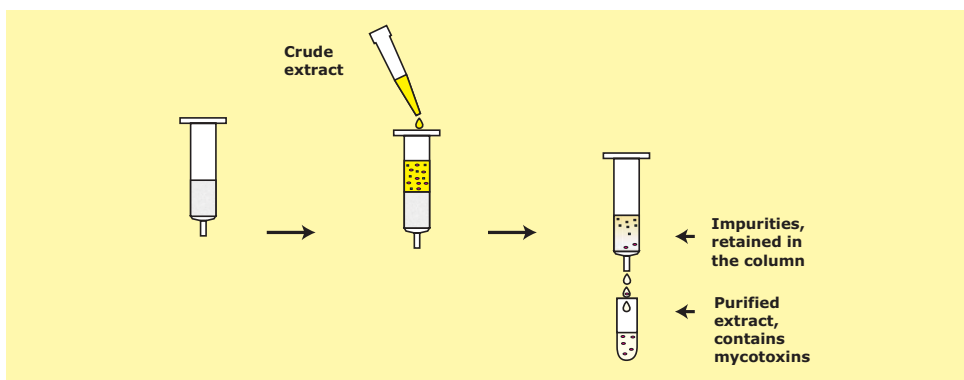
- Gives additional clean up
- Fast and simple use
- Recoveries: >90%
- Repeatability: <5%
- For complex commodities and foodstuffs  
use it after MycoSep®227 Trich+

## Procedure for Trichothecenes (Type A and B) Clean up



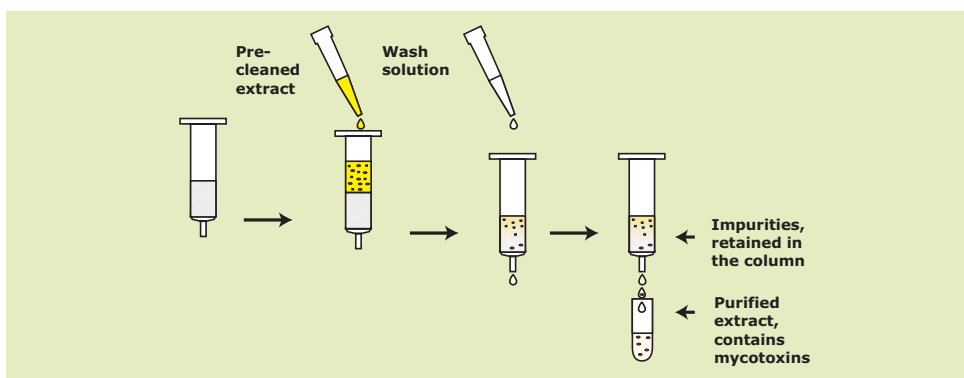
**1-step clean up**

**MycoSep® 227**  
**Trich+**  
**principle**



**1-step clean up**

**MultiSep® 227**  
**Trich+**  
**principle**



**MultiSep® 216**  
**principle**

### Order Information:

MultiSep®216

Order No.:COCMU2216, Box of 25

MycoSep®227 Trich+

Order No.:COCMY2227, Box of 25

MultiSep®227 Trich+

Order No.:COCMU2227, Box of 25

### For small sample sizes or simple matrices order:

MycoSep®225 Trich

Order No.:COCMY2225, Box of 25

MultiSep®225 Trich

Order No.:COCMU2225, Box of 25

### Standards:

B-Trichothecene mixture

(DON, NIV, 3-ACDON, 15-ACDON)

Order No.: 002009

Internal Standard:

DOM-1

Order No.: 002033

### Matrix Reference Material:

Deoxynivalenol in maize flour

Order No.: 003001