



## Bacteriological incubators "Incubat"

NATURAL CONVECTION.  
TEMPERATURE THERMOSTAT CONTROL WITH ANALOGUE THERMOMETER.  
ADJUSTABLE TEMPERATURES FROM AMBIENT +5 °C UP TO 80 °C.  
STABILITY:  $\pm 0.5$  °C. HOMOGENEITY:  $\pm 2$  % OF THE WORKING TEMPERATURE.  
INTERNAL GLASS DOOR.

2000

serie

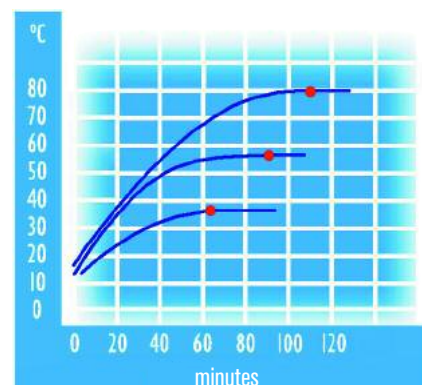
FEATURES, CONTROL PANEL, STANDARD AND ACCESSORIES (see pages 124 and 125).

### SAFETY:

OVER TEMPERATURE CUT OUT INCORPORATED ACCORDING TO THE EN.61010 STANDARD.  
ADJUSTABLE SAFETY THERMOSTAT DIN 12880.3.1 FITTED.



Horizontal model. Part No. 2001615



Performance graph of temperature and time.

- Set at 80 °C: 1 h 54'.
- Set at 56 °C: 1 h 46'.
- Set at 37 °C: 1 h 18'.

### STANDARD EQUIPMENT

2 shelves and 4 shelf guides.

### MODELS

Part No.	Capacity litres	Height / Width / Depth (interior) cm			Height / Width / Depth (exterior) cm			Shelves positions	Power W	Weight Kg
2000205	19	30	25	25	50	60	44	5	170	26
2000206	36	40	30	30	60	65	49	7	250	36
2001615	52	33	47	33	53	82	52	5	300	46
2000207	80	50	40	40	70	74	59	8	330	54
2000994	150	50	60	50	70	95	68	8	530	78

### SPARES

Shelves and guides.

Oven Part No.	2000205	2000206	2001615	2000207	2000994
Guides (2) (Set)	2000011	2000012	2000012	2000013	2000015
Shelves	2000021	2000022	2000024	2000023	2000025

Each self requires two guides i.e. one set.

### ACCESSORIES

Accessories must be factory installed.



Part No. **2000003** Timer switch  
0-12 hours.



**2000009** 24 hour programmer with continuous on/off cycling up to every 15 minutes.



# Digital bacteriological incubators "Incudigit"

**NATURAL CONVECTION.**  
**DIGITAL CONTROL AND DISPLAY OF TEMPERATURE AND TIME.**  
**ADJUSTABLE TEMPERATURE FROM AMBIENT +5 °C UP TO 80 °C.**  
**STABILITY: ±0.5 °C. HOMOGENEITY: ±2 % OF THE WORKING TEMPERATURE.**  
**SET ERROR: ±2% OF THE WORKING TEMPERATURE, RESOLUTION 0.1 °C**  
**INTERNAL TEMPERED GLASS DOOR.**

**2000**  
**serie**



**FEATURES, CONTROL PANEL, STANDARD AND ACCESSORIES (see pages 124 and 125).**

**SAFETY:**  
**OVER TEMPERATURE CUT OUT INCORPORATED ACCORDING TO THE EN.61010 STANDARD.**  
**ADJUSTABLE SAFETY THERMOSTAT DIN 12880.3.1 FITTED.**



*Horizontal model. Part No. 2001616*

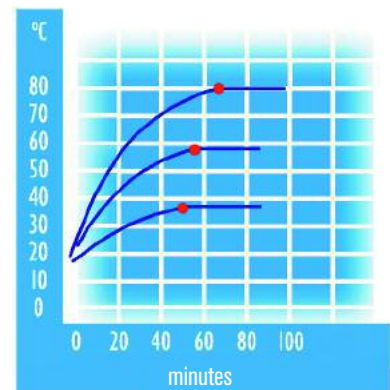
**RS-232 output download or to a printer of all parameters.**

**STANDARD EQUIPMENT**

2 shelves and 4 shelf guides.

**MODELS**

Part No.	Capacity litres	Height / Width / Depth (interior) cm			Height / Width / Depth (exterior) cm			Shelves positions	Power W	Weight Kg
<b>2001246</b>	19	30	25	25	50	60	44	5	170	26
<b>2001247</b>	36	40	30	30	60	65	49	7	250	36
<b>2001616</b>	52	33	47	33	53	82	52	5	300	46
<b>2001248</b>	80	50	40	40	70	74	59	8	330	54
<b>2001249</b>	150	50	60	50	70	95	68	8	530	75



Performance graph of temperature and time.

- Set at 80 °C: 1 h 12'
- Set at 56 °C: 54'
- Set at 37 °C: 48'

**SPARES**

Shelves and guides.

Oven Part No.	2001246	2001247	2001616	2001248	2001249
<b>Guides (2) (Set)</b>	<b>2000011</b>	<b>2000012</b>	<b>2000012</b>	<b>2000013</b>	<b>2000015</b>
<b>Shelves</b>	<b>2000021</b>	<b>2000022</b>	<b>2000024</b>	<b>2000023</b>	<b>2000025</b>

Each self requires two guides i.e. one set.

**ACCESSORY**

Accessories must be factory installed.

Part No.



**2000016** Digital printer for time and temperature with numerical printout on continuous paper roll, with print-intervals from 1 minute to 99 hours.



## Incubators for bacteriology and cell culture "Incubig"



**NATURAL CONVECTION.**  
**MICROPROCESSOR CONTROL AND DIGITAL DISPLAY OF TEMPERATURE AND TIME.**  
**ADJUSTABLE TEMPERATURE FROM AMBIENT +5 °C TO 80 °C.**  
**STABILITY: ±0.5 °C. HOMOGENEITY: ±2% OF THE WORKING TEMPERATURE.**  
**SET ERROR: ±2% OF THE WORKING TEMPERATURE, RESOLUTION 0.1 °C**  
**INTERNAL TEMPERED GLASS DOOR.**

### SAFETY:

**STANDARD EN.61010 OVER TEMPERATURE CUT OUT FITTED.**  
**STANDARD DIN 12880.3.1. ADJUSTABLE SAFETY THERMOSTAT FITTED.**

### Capacities up to 720 litres

#### FEATURE

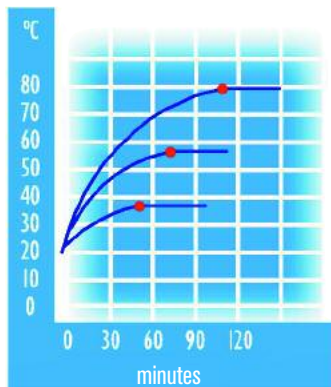
Microprocessor control and digital display of temperature and time.  
 Large surface area heating elements.  
 Inner chamber made of AISI 304 stainless steel.  
 Double door, interior door of tempered glass that allows the user to see the contents of the chamber without opening the door.  
 Adjustable air vent  
 Epoxy covered external case.  
**RS 232 download to a computer or printer of all parameters.**

#### STANDARD EQUIPMENT

Para Part No. 2000237, 2 shelves and 4 shelf guides.  
 Para Part No. 2003711 and 2002471, 2 shelves.



Model Part No. 2000237.



Performance graph of temperature and time.

- Set at 80 °C: 1 h 15'.
- Set at 56 °C: 1 h 10'.
- Set at 37 °C: 54'.

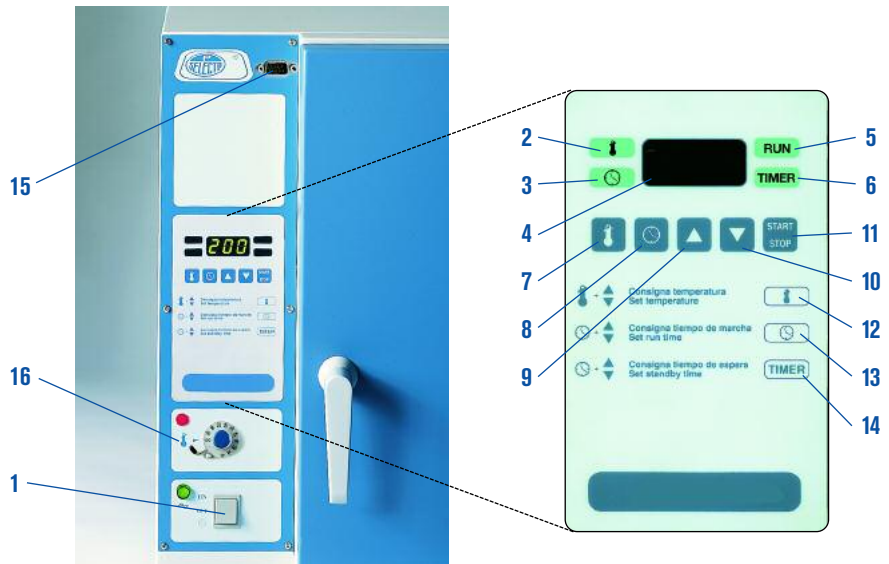
Note: To obtain the optimum homogeneity at the set temperature, the load should not surpass more than 70 % of the volume of the chamber.



Models Part No. 2003711 and 2002471.

## CONTROL PANEL

1. Illuminated main switch.
2. Temperature mode indicator.
3. Time mode indicator.
4. Display for temperature and time.
5. Operating, run mode.
6. Delay time indicator.
7. Push button temperature selector.
8. Push button time selector.
9. Push button "increase" value or parameter.
10. Push button "decrease" value or parameter.
11. Push button Stop/Start.
12. Set temperature.
13. Set run time: time period from 1 minute to 9 hours 59 minutes, or up to 99.9 hours, once the set temperature value has been reached.
14. Set wait time before starting the run, time period from: 1 to 24 hours.
15. RS232 download and print of all parameters.
16. Adjustable safety thermostat, that maintains the temperature in the case that the microprocessor fails and indicator lamp.



## MODELS

Part No.	Type	Capacity litres	Height / Width / Depth (interior) cm			Height / Width / Depth (exterior) cm			N° of shelf guides	Power W	Weight Kg
<b>2000237</b>	1 door	288	80	60	60	97	91	76	8	570	87
<b>2003711</b>	2 door	400	100	80	50	130	114	75	10	1100	160
<b>2002471</b>	2 door	720	120	100	60	152	134	85	12	1600	225

## ACCESSORY

Accessories must be factory installed.



Part No.

**2000016** Digital printer for time and temperature with numerical printout on continuous paper roll, with print intervals from 1 minute to 99 hours.

## SPARES

Shelves and guides.

Oven Part No.	2000237	2003711	2002471
<b>Shelves</b>	<b>2002372</b>	<b>2000063</b>	<b>2000064</b>
<b>Guides (2) (Set)</b>	<b>2002371</b>	-	-

Each self requires two guides i.e. one set.



Selecta group. One of the diverse departments for verification and storage of product subassemblies.